

# Sawtry Community Crunch



**Bitesize news for you, written by you**

**December 2009**

## Celebrating Christmas: The School Christmas Concert

The Christmas Concert provides the opportunity to celebrate Christmas through students' performances. It is a festive event which showcases the many talents of Sawtry Community College.

This year's Christmas Concert was held on the 9th and 10th December and lasted for two hours. To keep the Christmas cheer going mince pies and festive drinks were sold in the interval.

There was a range of solo performances which showed student's singing abilities. The group performances

featured various dance routines from different years, as well as the school choir taking centre stage. The music was provided by the school orchestra and shows the many musical talents of students in our school.

James Allis (Choir) said 'It was a fun to take part in this event and it was a good experience'. A lot of time went into practicing for the big event with help provided by Mrs Mann, Mr Green and Mrs Rai. A big thank you and well done to those involved for starting the Christmas season with a bang!

## Vertical Tutoring— Student's views

A big change occurred at the start of this academic year. Form groups are longer organised by year. The forms are now vertical which mean each form has at least two students from each year. The school was also divided into two schools: St Judith and St Andrews, within this different zones were formed which means form groups can work together on charity events and other activities.

We asked for students' views on this change.

Year 7— "I like that I can be with older years. It means I can speak to other years about similar things which happened to them in Year 7" (Sam Hammond)

Year 9— "It is a useful system as older students can help us and check on what we are doing. We have a mentor system in our form which can be helpful" (Kim Butler)

Year 11— "It provides us with the chance to interact with various year groups and seems to bring the school together as a whole" (Alex Killner).

## What can a school trip do for you?

School trips are organized for every year. They range from residential (where students stay over) to day trips.

Some school trips allow you see the subjects you study in the real world

and develop your knowledge. Others provide you with a more social experience, allowing you to gain more from your time at Sawtry.

We would recommend that you should attempt

to go on trips as you might not get the chance to visit places when you have left!

Turn inside for more detail on school trips...

## What to look out for inside...

- The Xmas Quiz with prizes to be won
- The latest entertainment from your community
- Your views on the Canteen
- What's going on in Departments
- Local news

## Editor's letter

Hello, and welcome to the first edition of Sawtry College Crunch. We have worked hard to try and provide you with news from across the College and the community.

We hope you are in the Christmas spirit. All the decorations are up in classrooms and preparations are well under way for the Christmas Fair on the last day of term. We are wondering which classroom will win the decoration competition. Indeed, we have included a Christmas puzzle to get you in the festive mood.

In this edition you can read about school trips, a local band, the Great Fen Project and a discussion on canteen food. If there is anything you would like to be included in the future please let us know or you could even write an article yourself!

We hope you enjoy the new school newspaper. From the team: Merry Christmas and a Happy New Year

Rebecca Newson—Editor

## Meet the Team

### Editor

Rebecca Newson

### Community Team

Francesca Francis  
Emma Markwell

### Extra-curricular Team

Nina Palmer  
Jessie Snare  
Anna Radwell

### Department Team

Grace Thoburn  
Joe Anderson  
James Allis  
George Warren  
Autumn Rose

### Entertainment Team

Grace Cattell  
Rebecca Rickwood  
Alex Arnold

### Advertising

Jordan Parsell

## Charity News

As a school we raised £1173.02 on Jeans for Genes Day and 276.28 for the Poppy Appeal. Thanks to everyone for supporting this cause.

This year we are aiming to support Children in Need and Sport/Comic Relief through money raising schemes and raising awareness of these charities. Charity schemes will be developed through the different schools with a competition to see which school can raise the most in both money and awareness!

The Enterprise Across the Curriculum scheme is hoping to raise money through the Christmas Fair—Make sure your form has a stall!

Remember! It is non-uniform day on Friday 18th December. The money raised will go to local charities

## Booked up!

The 'Booked Up' campaign is a Government initiative aimed to encourage young people to read. A free book is given out to every year 7 student in their English library sessions. The favourite book chosen was 'Blood Hunters' written by Steve Voake. This is the third year this campaign has run and it will hopefully continue in the future.

Sounds interesting? Look out for the Readathon Challenge in your English lessons!



# THE OZZY WAY!

## A Trip of a Lifetime.

**Last spring, Year 9 (now Year 10) went to Osmington Bay for a school residential run through PGL. This year's Year 9 are going to Caythorpe Court which is also a PGL trip.**



The Year 9 end of year celebration is a residential adventure trip targeting team building and facing your fears. It was located in Weymouth, and is now in Lincoln.

It is mostly focused on physical activities such as rock climbing, abseiling and high ropes. Mr Bridgeman said 'The trip encourages team building, decision making and self confidence which are all very important when doing GCSEs.' The trip is organised to symbolise the end of KS3 and is a break before the stress of GCSEs and Coursework.

Pupils described it as 'Not for wimps, but if you like adventure and that sort of thing it's right up your street!'. Other students stated they had 'the time of my life' and they enjoyed seeing the teachers attempt the same activities.

So last year's trip was a huge success, however this year they are changing the location but why? The main reason for changing location is that Caythorpe Court is closer because it is in Lincolnshire whereas, Osmington Bay is in Weymouth. The activities are all the same and we will be doing things like climbing, swinging from ropes and problem solving.

We asked Mr Hughes (Art): Are you looking forward to it? He answered 'Yeah, I am really looking forward to it and the new experiences!' Trips like these give people the opportunity to do things they would never otherwise do and talk to people they wouldn't normally talk to.

This year's Year 9 will be going on the 30<sup>th</sup> April – 3<sup>rd</sup> May 2010 so the weather will be okay but maybe rainy, fingers crossed that it will be nice so this year's trip will be as good as the last.

### **Forthcoming Trips from now until March.**

#### **Year 7**

History - Introduction to life in the Middle Ages. December.

#### **Year 8**

Art – Fitzwilliam Museum, Cambridge. March

Black Country Museum, Dudley. March

#### **Year 9**

Art – London Eye, Dali Universe and National Gallery, London. March

#### **Year 10**

French – Study visit possibly Normandy. March.

# Entertainment

## Christmas Tree

B  
 H Y H  
 M R H K O  
 S A I G D G A  
 V G G R E E N H F  
 I W O X R  
 N C B R C E N  
 S A A G N I T B R  
 S U A L C A T N A S N  
 E D X M E I P  
 Y O J Q E M W D S  
 P G U S T N E S E R P  
 A L B G P W T N M K W Q F  
 C H R I S T M A S  
 O M S U N T R E E N W  
 Z N C D E K H D X J O V D  
 B G Z U R R L G I C V W R Y F  
 P X M A E I Y Q H K U  
 M R M G W G L H D V K N E  
 X C X R J E N C M A M R R U X  
 B C Z O W V P A E G W F L H S Q I  
 U E V  
 C J A  
 V W D

Angel  
 Boughs  
 Christmas  
 Excitement

Green  
 Joy  
 Lights  
 Magical

Ornaments  
 Presents  
 Santa Claus  
 Snow

Tree  
 Twinkle  
 Winter



## Quiz

If you complete this quiz and you feel like you have all the right answers come and find Miss Powell on Tuesday Lunchtime.

1. In the song "The Twelve Days Of Christmas", what did my true love give to me on the 12th day?
2. Who wrote the Christmas story, "The Snowman"?
3. What colour is Santa Claus' belt?
4. Which Michael Jackson song was a Christmas number one in 1995?
5. What is the most popular Xmas tree topper?

## Local Band News—The Raudive

The Raudive formed in Cambridge in 2007 as Ulna, this was after two of the members responded to an ad on the local band message board.

Taking time to refine and develop their sound, in 2008 they changed their name to reflect the mood of their new music they created and their joint interests in the offbeat and exponential.

The band consists of Marc Atkinson (Guitar and vocals), Danny Davies (Bass) and Chris Watson (Drums). They draw from an eclectic range of influences including Sonic Youth, Burial, The Replacements, Joy Division, Se-

badoh and the Sex Pistols without sounding like any of them.

Considered to sound more like a five-piece, they put together glacial guitars and often dark, fragmented lyrics to a thundering rhythm.

The bands have many good songs, such as Warning, Under the Willows and Margins.

Currently set to release their first mini-album in 2009 they are a band not to be missed live and one to watch for the future. I would definitely recommend them to anyone!

## Local News—The Great Fen Project

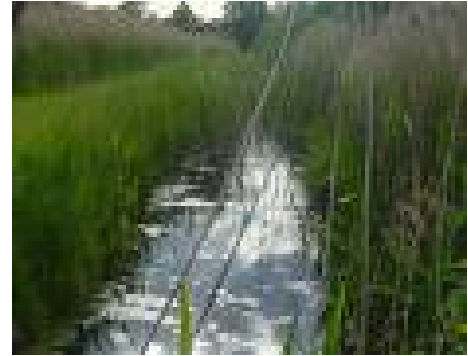
The great fen project will involve over 3700 hectares of fenland being reflooded to create a new habitat for wildlife such as birds. The fen was drained during the 17<sup>th</sup> century by the Earl of Bedford who employed Dutch engineer Cornelius Vermuyden to drain the fens.

Most of the fens are no more than 10metres above sea level, making them and the land around some of the lowest lying land in Britain.

The fens are surrounded by woodland and grassland containing many rare species of plant.

This affects us at Sawtry Community College as we live in the Fenland area. We are very lucky to have this environmental habitat on our doorstep.

Visit: [www.wicken.org.uk](http://www.wicken.org.uk) for more information.



## Fighting for a Food Choice!

When walking into the canteen we were confused by the choice of food available.

We investigated why we are allowed burgers, pizzas and chips but not sweets and crisps.

We spoke to the canteen staff and they explained how the menus feature a variety of food which should appeal to all sorts of tastes. They cannot legally sell sweets and chocolates as this goes against recent Healthy Eating Legislation. So we have written a letter explaining this issue directly to the Education Minister. We are awaiting a reply which will be included in our next issue.

We are also trying to find out if there is a way you can still get the food you would like even though you are one of the last in the canteen. At the moment if you are last most of the foods you like will have already been taken. We hope they can find a way to make the last students have an option otherwise students may begin to skip lunch which is not good for your brain e.g. not good for working.



## Challenging Maths in Action

This year and next year, talented year eight students from this area will be going to a series of Maths workshops organised by the Royal Institute of Mathematicians at Cambridge University sites.

In the first series of Maths workshops there were 28 Participants and three of them attend Sawtry Community College. They were Grace Cattell, Francesca Francis and Lydia Richley. Francesca Francis commented 'It was really

good and interesting.'

There are five workshops in one series and the last involves a certificate presentation. All the workshops have a different theme and coordinator, one example was Mathletics and Origami. We learned about solving equations quickly and to make 3D shapes out of paper. One of our Maths teachers Mr Valmonte attended the last workshop.

# AYR Nurseries Landscapes

NCH Amenity Horticulture

ANCH Landscape Design & Construction

Keeping it local.....we are in Sawtry just over the fly over on the right hand side heading towards Huntingdon



For all your garden & landscaping requirements:

- \* Free design service and advice
- \* Paving, patios & block driveways
- \* Fencing & decking
- \* Gates & metal railings
- \* Slates, gravels, pebbles & cobbles
- \* Tree and shrub planting
- \* New Lawns (turf or seed)

Various Compost's to suit all your garden needs



Opening times

Tuesday to Friday  
08:30 - 16:00

Saturday & Sunday  
10:00 - 14:00

Sorry closed Mondays

Old Great North Road, Sawtry, Huntingdon, Cambridgeshire PE28 5XN  
Tel/Fax: 01487 830 482 / Mobile: 07984 786 295  
e-mail: ayrlandscapes@aol.com / www.allyearround.co.uk

## Department Focus

### Miss Sharp (Technology)

We called up to the staff room, very scary, it's a 'how clean is your house' episode ... ..The draining board is covered in used mugs with mould and slime all over them. We spoke to Miss Sharp about her department and the stuff that's going on, Year 9 have now started doing textiles which is new this year. Miss Sharp likes practical activities and is very proud of her department and students. Do you know the vacuum was invented in 1868? Vinegar is a good household cleaner.



### Sawtry Community College

Telephone: 01487 830701

Fax: 01487 831679

E-mail: college@sawtrycc.org.uk

Website: www.sawtrycc.com

### Mr Sedgwick (Geography)

We wanted to find out what was happening in the Geography department this term, so we went to visit Mr. Sedgwick.

During the interview, we found out that year eight students are making model volcanoes and Year Twelve students are working on climate change in depth. Yes, even the older students do interesting and exciting things in Geography! But the year twelve students may have even better things to look forward to; as Mr. Sedgwick is trying to convince Mr. Pink about a field trip. Mr. Sedgwick also told us that his favourite aspects of Geography are: Geology and Physical Geography. He likes tectonic and climate change. He's also a weather geek! He loves Geography and is incredibly proud of all his amazing students, especially the Year Elevens.



### Sawtry Community

College

Fen Lane

Sawtry

Huntingdon